



**India Meteorological Department
(Ministry of Earth Sciences)**

NATIONAL BULLETIN NO. 18 (LAND/01/2024)

TIME OF ISSUE: 0830 HOURS IST

DATED: 06.08.2024

FROM: INDIA METEOROLOGICAL DEPARTMENT (FAX NO. 24643965/24699216/24623220)

TO: CONTROL ROOM, NDM, MINISTRY OF HOME AFFAIRS (FAX.NO. 23093750)

CONTROL ROOM NDMA (FAX.NO. 26701729)

CABINET SECRETARIAT (FAX.NO.23012284, 23018638)

PS TO HON'BLE MINISTER FOR S & T AND EARTH SCIENCES (FAX NO.23316745)

SECRETARY, MOES (FAX NO. 24629777)

H.Q. (INTEGRATED DEFENCE STAFF AND CDS) (FAX NO. 23005137/23005147)

DIRECTOR GENERAL, DOORDARSHAN (23385843)

DIRECTOR GENERAL, AIR (23421105, 23421219)

PIB MOES (FAX NO. 23389042)

UNI (FAX NO. 23355841)

D.G. NATIONAL DISASTER RESPONSE FORCE (NDRF) (FAX NO. 26105912, 2436 3260)

DIRECTOR, PUNCTUALITY, INDIAN RAILWAYS (FAX NO. 23388503)

CHIEF SECRETARY, MADHYA PRADESH (FAX NO. 0755-2441076)

CHIEF SECRETARY, UTTAR PRADESH (FAX NO.0522-2239283)

CHIEF SECRETARY, RAJASHTHAN (FAX NO. 0141-2227114)

CHIEF SECRETARY, GUJARAT (FAX NO. 079-23250305)

CHIEF SECRETARY, MAHARASHTRA (FAX NO. 022-22028594)

Sub: Depression weakened into a well marked low pressure area over central parts of Pakistan.

The depression over Pakistan and adjoining Northwest Rajasthan moved west-northwestwards and weakened into a **Well Marked Low Pressure area** over central parts of Pakistan at 0530 hours IST of today, the 6th August, 2024

It is likely to continue to move west-northwestwards and weaken further into a low pressure area during next 12 hours.

Warnings (Graphics Attached):

(i) Rainfall Warning:

West Rajasthan:

Light to moderate rainfall at a few places is very likely with **heavy to very heavy rainfall** at isolated places on 6th August.

East Rajasthan:

Light to moderate rainfall is very likely with **heavy rainfall** at isolated places on 6th August

Gujarat region:

Light to moderate rainfall at most places is very likely with **heavy rainfall** at isolated places on 6th August.

Saurashtra & Kutch:

Light to moderate rainfall at many places is very likely with **heavy rainfall** at isolated places on 6th August.

(iv) Impact Expected

- Localized Flooding of roads, water logging in low lying areas and closure of underpasses mainly in urban areas of the above region.
- Occasional reduction in visibility due to heavy rainfall.
- Disruption of traffic in major cities due to water logging leading to increased travel time.
- Surface runoff/ inundation may occur at some fully saturated soils & low-lying areas
- Minor damage to kutchha roads.
- Possibilities of damage to vulnerable structure.
- Localized Landslides/Mudslides/landslips/mud slips/land sinks/mud sinks.
- Damage to horticulture and standing crops in some areas due to inundation.
- It may lead to riverine flooding in some river catchments (for riverine flooding please visit Web page of CWC)

(v) Action Suggested

- Check for traffic congestion on your route before leaving for your destination.
- Follow any traffic advisories that are issued in this regard.
- Avoid going to areas that face the water logging problems often.
- Avoid staying in vulnerable structure.

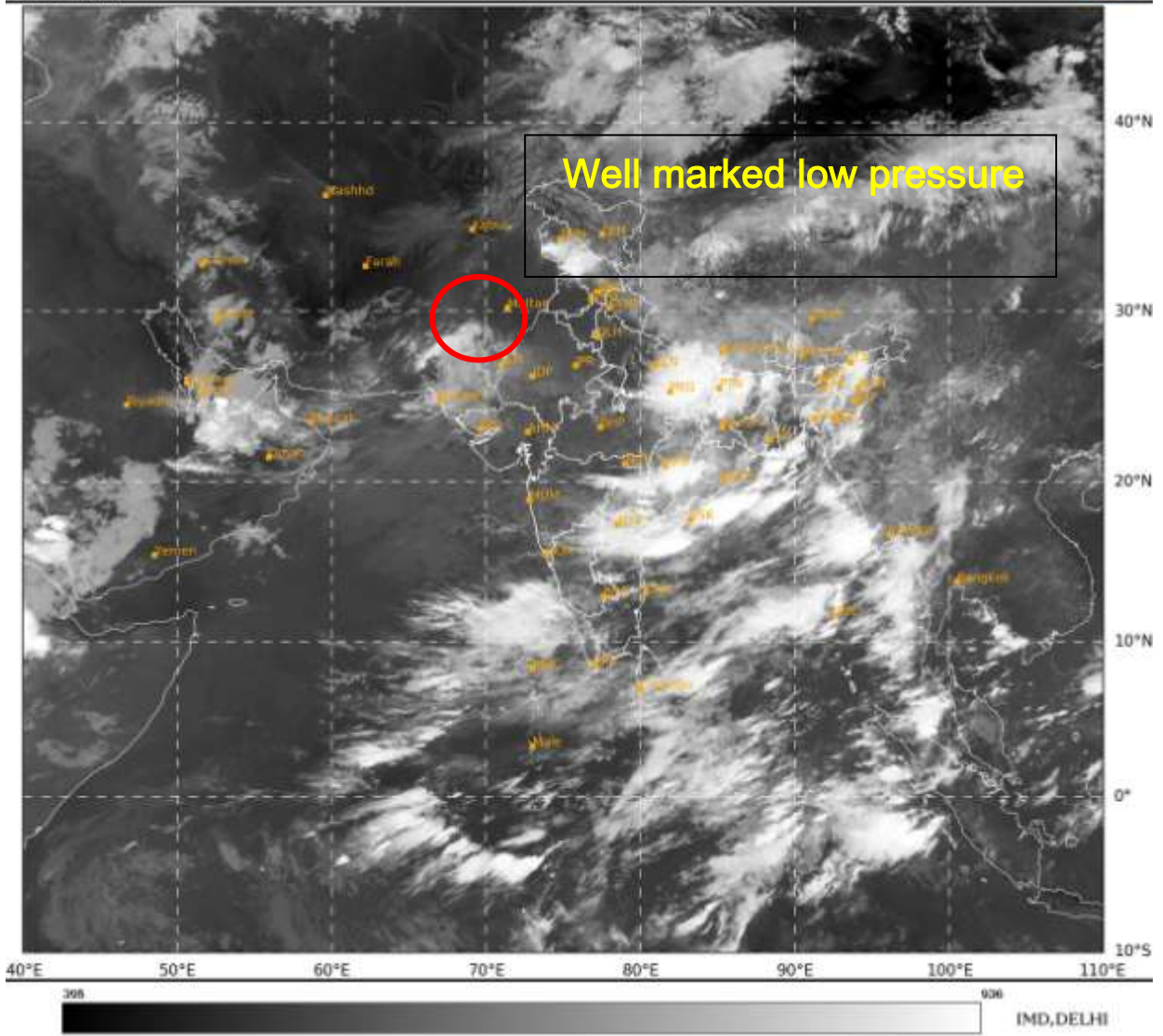
This is last update in association with this system. However, regular bulletins in association with this system shall continue from National Weather Forecasting Centre and concerned Meteorological Centres.

(Shibin Balakrishnan)
Scientist-D, Cyclone Warning Division, New Delhi

*Copy to: ACWC Kolkata/RMC, New Delhi/RMC, Nagpur/ MC, Bhopal/MC, Jaipur/CWC
Bhubaneswar/MC, Lucknow/RMC, Mumbai/MC, Ahmedabad*

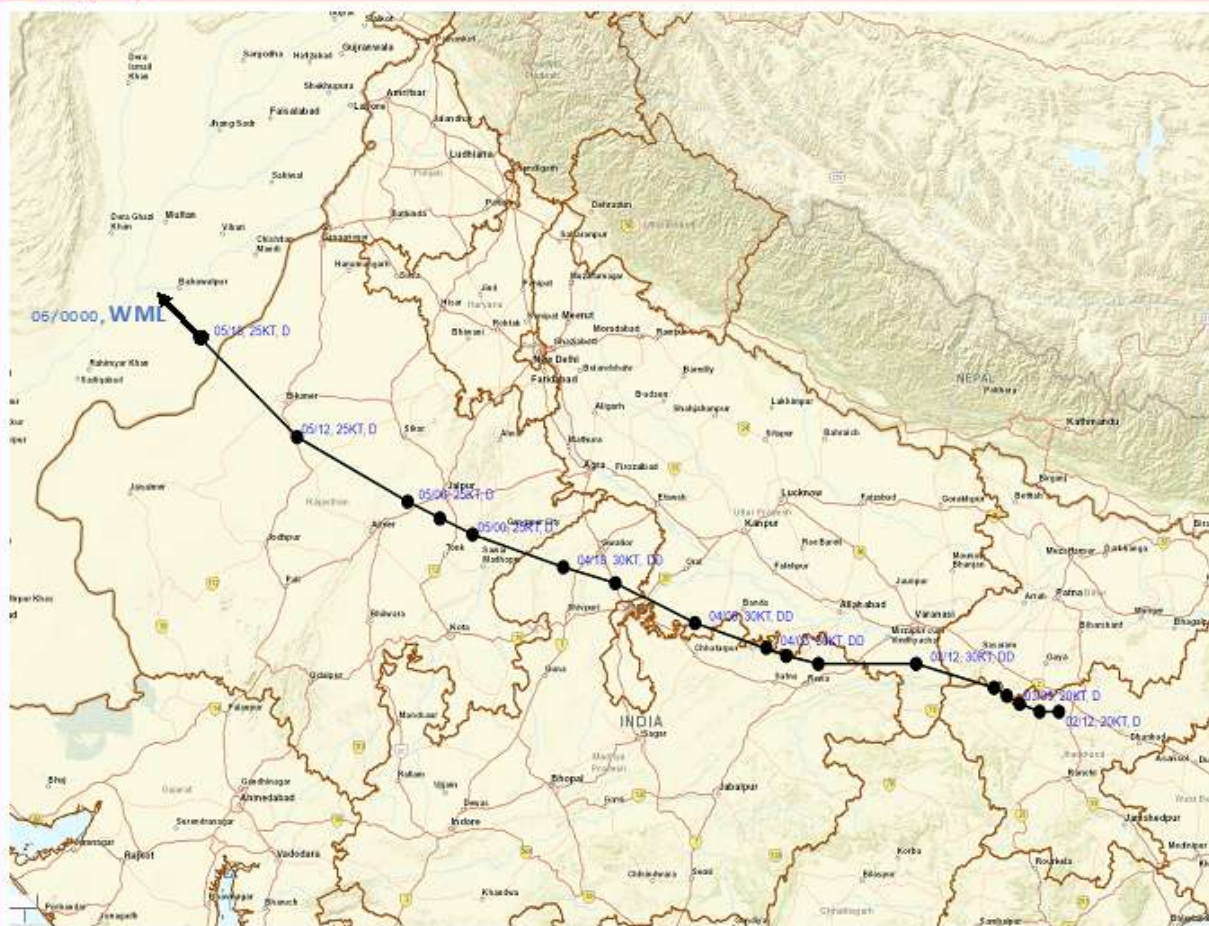
SAT : INSAT-3DR IMG
IMG_TIR1 10.8 um
LJC Mercator

06-08-2024/(0245 to 0312) GMT
06-08-2024/(0815 to 0842) IST





OBSERVED TRACK OF DEEP DEPRESSION OVER INDIA DURING 02ND AUGUST to 06TH AUGUST, 2024.



DATE/TIME IN UTC

IST=UTC + 0530

L: LOW PRESSURE AREA

WML: WELL MARKED LOW PRESSURE AREA

D: DEPRESSION (17-27 KT)

DD: DEEP DEPRESSION (28-33 KT)

CS: CYCLONIC STORM (34-47 KT)

SCS: SEVERE CYCLONIC STORM (48-63KT)

VSCS: VERY SEVERE CYCLONIC STORM (64-89 KT)

ESCS: EXTREMELY SEVERE CYCLONIC STORM (90-119 KT)

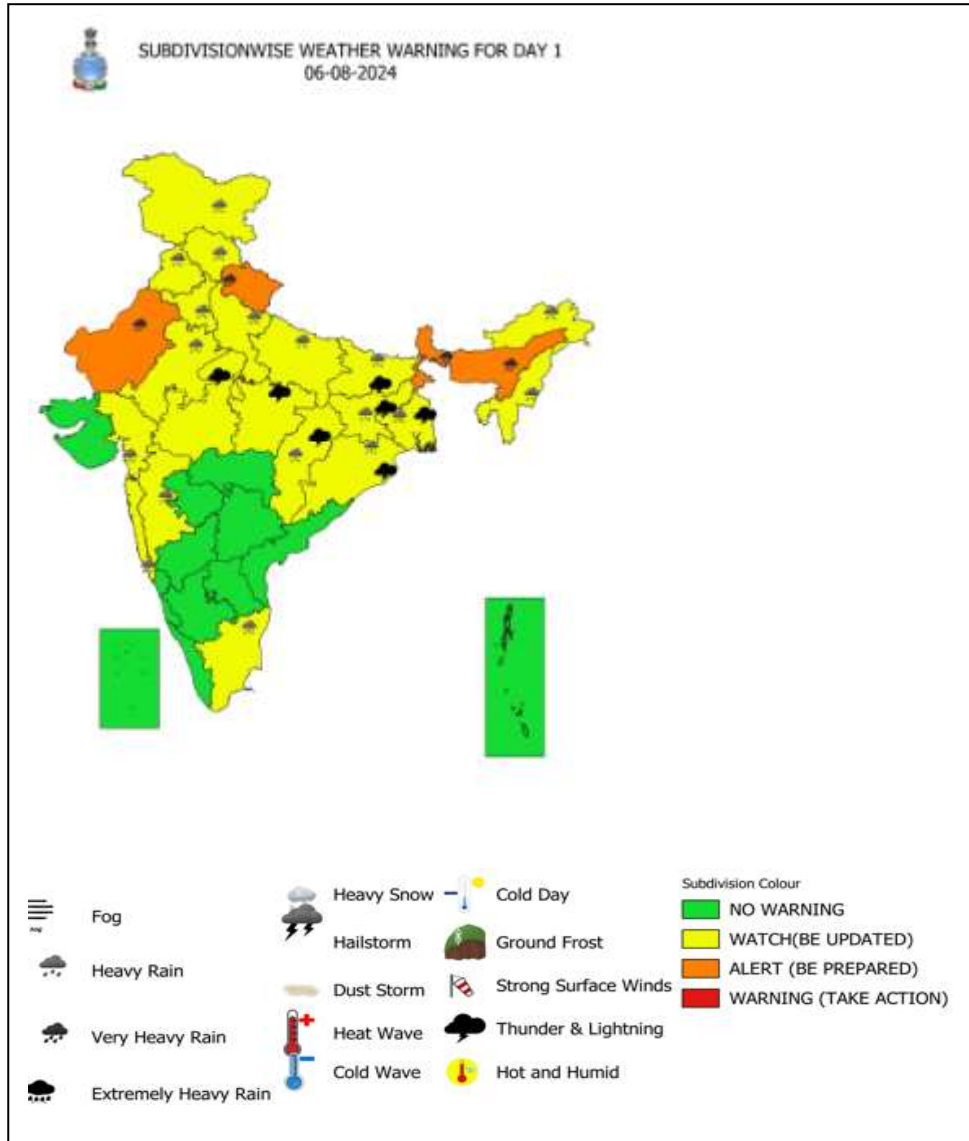
SuCS: SUPER CYCLONIC STORM (≥ 120 KT)

- LESS THAN 34 KT
- 34-47 KT
- ≥ 48 KT
- OBSERVED TRACK
- FORECAST TRACK
- CONE OF UNCERTAINTY
- AREA OF MAXIMUM SUSTAINED WIND SPEED:
40-50 KMPH GUSTING TO 60 KMPH

IMPACT OVER THE SEA

MSW (knot/kmph)	Impact	Action
28-33 (52-61)	Very rough seas	Total suspension of fishing operations
34-49 (62-91)	High to very high seas	Total suspension of fishing operations
50-63 (92-117)	Very high seas	Total suspension of fishing operations
≥ 64 (≥118)	Phenomenal	Total suspension of fishing operations

Warning Graphics



- Action may be taken based on **ORANGE AND RED COLOUR** warnings.
- Vulnerable regions likely urban and hilly areas action may be initiated for heavy rainfall warning.
- As the lead period increases forecast accuracy decreases.